



DEPARTMENT OF ADMINISTRATIVE SERVICES

# Milwaukee County

Jim Tarantino

• Director, Economic Development

City of Wauwatosa  
Planning Division  
7725 West North Ave  
Wauwatosa, WI 53213

To Whom It May Concern,

Milwaukee County is submitting an application for a Text Amendment to the Special Purpose Medical (SP-MED) district. This Amendment is intended to expand the definition of allowable conditional uses to include “Multi-Unit Buildings” under the Residential category. This is intended to apply to “Parcel 1” of the CSM that has been submitted simultaneous to this request along with the re-zoning application for Parcel 2 of that CSM to Park zoning and the re-zoning of Tax Key 373999907 also to Park zoning.

Milwaukee County is committed to protecting natural resources and critical species habitats. We also acknowledge the demand for residential development in Wauwatosa and the importance of creating locations where this development can occur. The addition of “Multi-Unit Residential Buildings” to the list of conditionally approved uses under SP-MED allows for tax base to be generated in this other Medical district that is heavily, if not entirely, tax exempt. The tax base generated from new development helps the County to pay for the maintenance of natural resources so we are asking that this request be considered concurrent to the aforementioned Parks rezoning requests.

Thank you,

Jim Tarantino

## **24.06.060 - SP-MED, Medical Center District.**

A.

Uses. Principal uses are allowed in SP-MED districts in accordance with the use table of [Section 24.07.030](#).

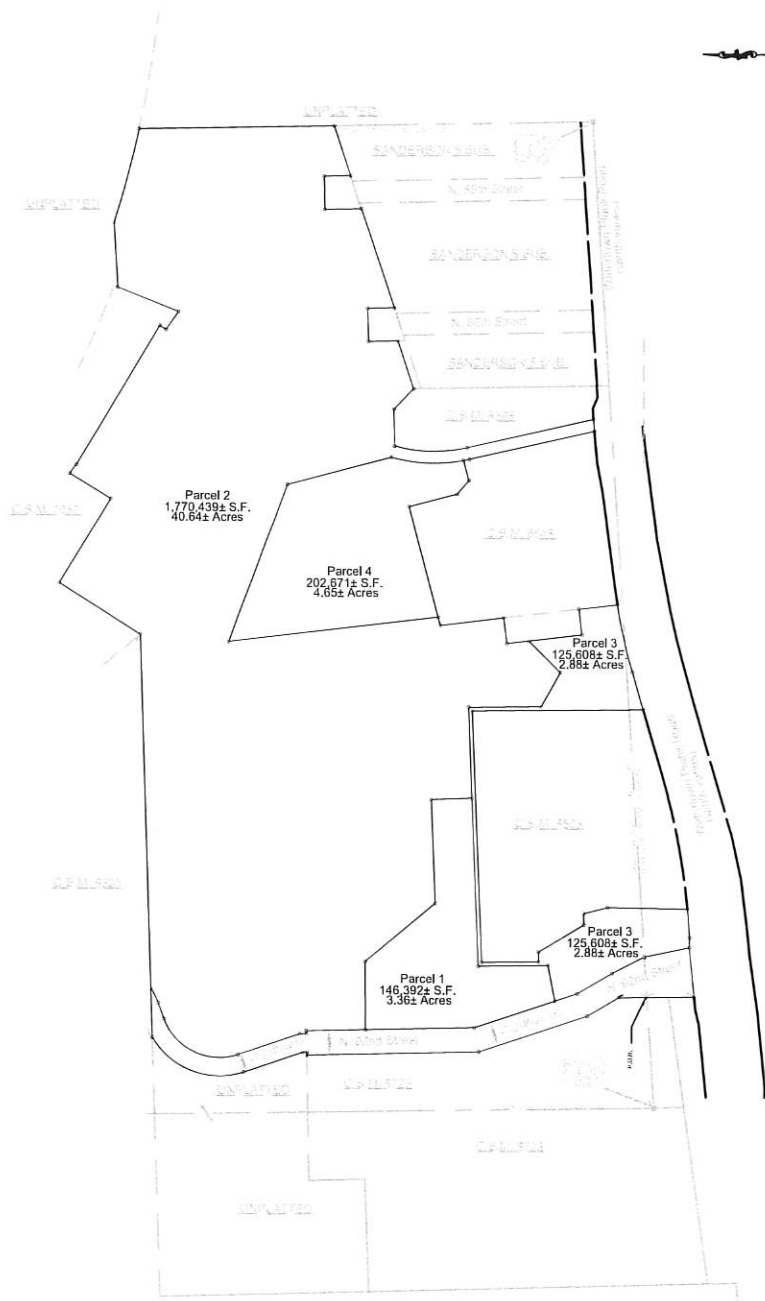
...

## **24.07.030 - Use Table.**

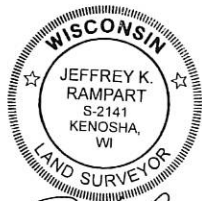
The following table identifies principal uses allowed in residential, commercial and industrial zoning districts. See [Section 24.07.020](#) for information about how to interpret the use table.

Add "Multi-Unit Building" as a Conditional use under SP-MED special use district.

# CERTIFIED SURVEY MAP



T DENOTES 1" X 2' IRON PIPE  
 (WEIGHT: 1.13 LBS PER FOOT)  
 BEARINGS REFER TO GRID  
 NORTH, STATE PLANE COORDINATE  
 SYSTEM SOUTH ZONE



J.K.R SURVEYING, INC.  
 8121 22ND AVENUE KENOSHA, WI 53143  
 SURVEYOR: JEFFREY K. RAMPART, P.L.S.

**KSingh** | Engineers  
 Scientists  
 Consultants

3636 N. 124TH STREET, WAUWATOSA WI, 53211